



#1

LEGISLATIVE OUTLOOK



2020 BUDGET SESSION

Short-Term

- State revenue **looks** looked pretty good, still okay.
- Not anticipating any new cuts/reductions.

Long-Term

- Doom and gloom with the demise of Coal.
- K12 Funding Deficit/Cliff.
- Questions about the Rainy Day fund.



GOVERNOR'S BUDGET

- State Aid to the Community Colleges
 - No new, unrestricted funding
 - Health Insurance Issues – Premium increases, prior cuts
- Employee Compensation
 - One-time stipend/bonus (details TBD)
- Capital Construction
 - LCCC RAC



TRYING TO DO MORE WITH LESS

Unrestricted State Aid*

- 11-12 Biennium \$191.9 million
- 19-20 Biennium \$176.2 million = 8.2% cut
\$15.7 million less

\$53.8 million less when adjusted for inflation



FEWER LOCAL FUNDS AS WELL

Local Funding*

- 15-16 Biennium \$73.1 million
- 19-20 Biennium \$69.1 million = 9.5% out
\$4 million less

\$-4.3 million less when adjusted for inflation



RESPONSE TO FUNDING ISSUES

- WCCC has increased tuition 8 times over 10



PRESIDENTS' PROPOSAL

\$30 Million to the Standard Budget for:

- Economic Development & Diversification (Program Development)
- Talent Recruitment & Retention (COLA/Market Adjustments)
- Higher Ed Attainment (Statewide Marketing and Recruitment)
- Operational Efficiency and Effectiveness (Campus Safety)

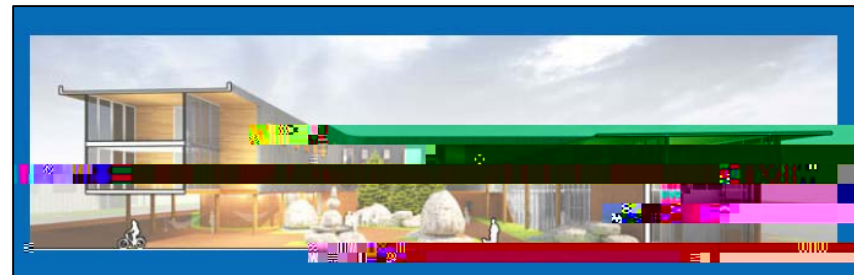
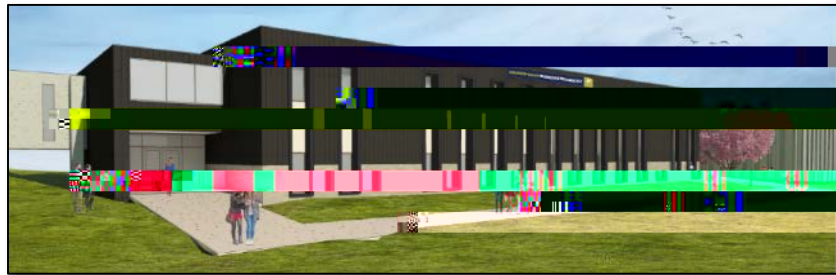


#2

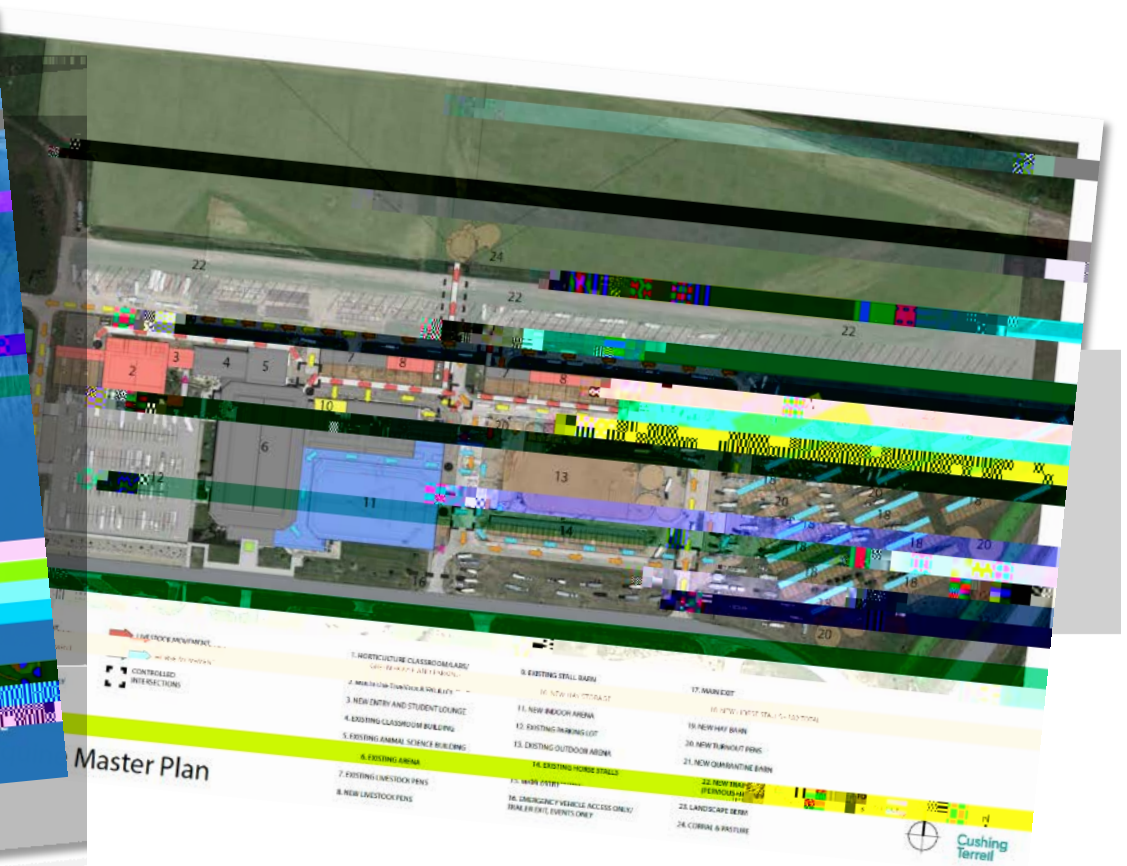
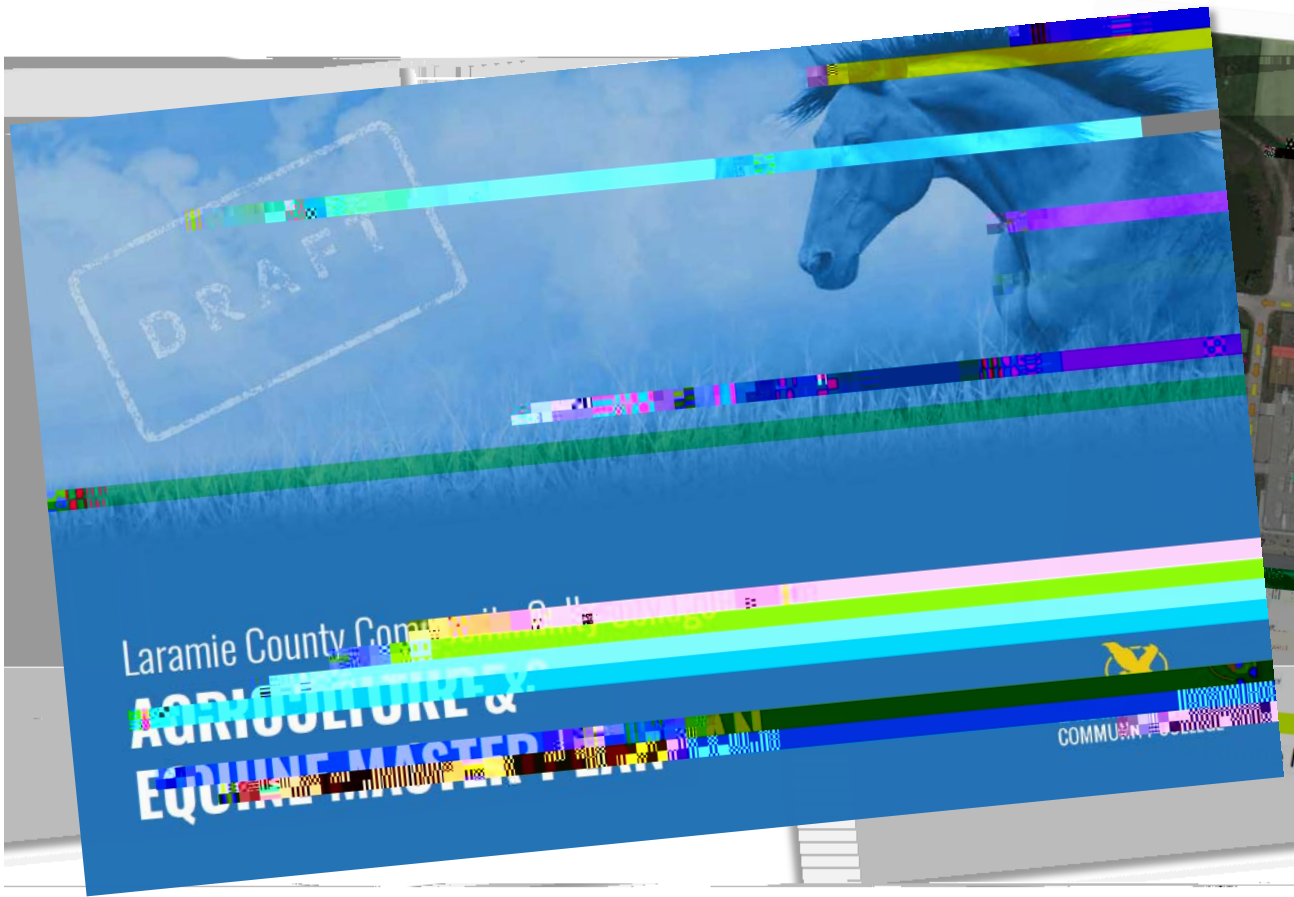
BUILDING UPDATES



LCCC CONSTRUCTION

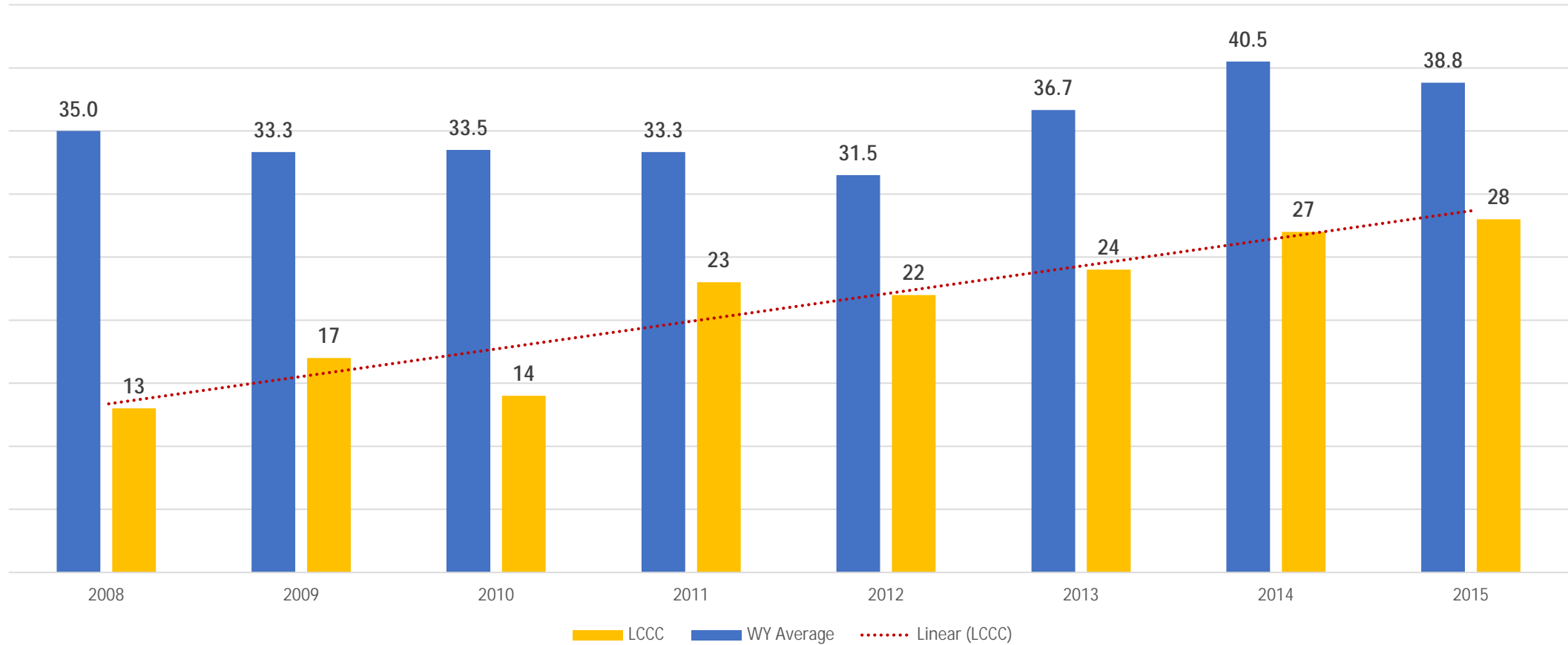


AG/EQUINE MASTER PLAN



WYOMING CC GRAD RATES

Graduation Rates by Cohort Entering Year
150% of Normal Time (3 Years)



WHAT IS GUIDED PATHWAYS?

A research-based framework for redesigning the college to improve the student experience from entry through graduation.

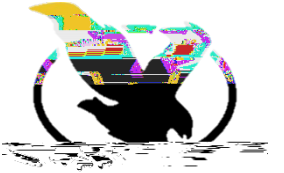
Students are more likely to complete if they:

1. Choose a program and develop an academic plan early on;
2. Have a clear road map of the courses they need to take to complete a credential; and
3. Receive guidance and support to help them stay on plan.



4 PILLARS OF GUIDED PATHWAYS



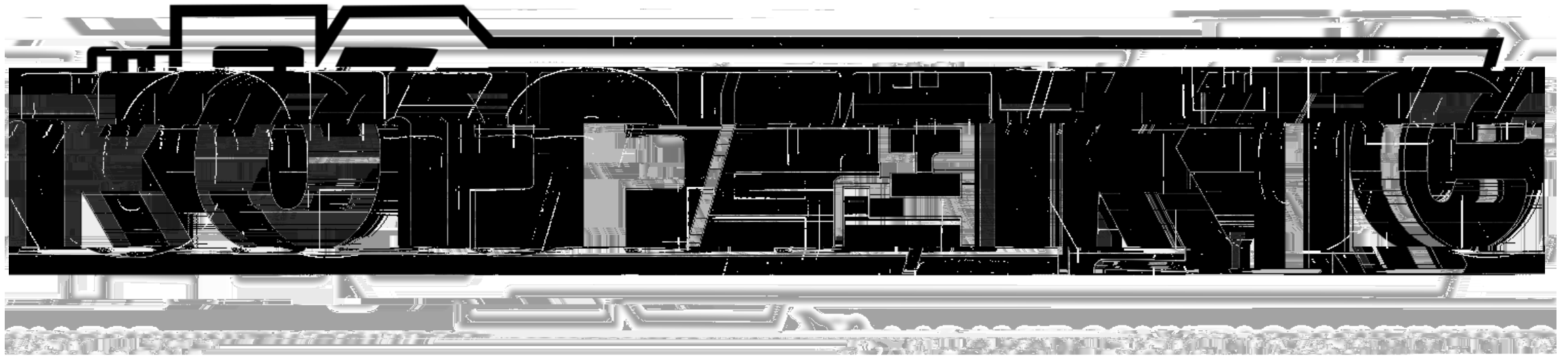


FEATURES & COMING ATTRACTIONS

Accomplishments to Date

- Seven Pathways & Pathway Degrees
- Career Exploration Early and Often
- New, Streamlined Admissions Process
- General Education Program with Cross-Cutting Practices
- Enterprise Student Success system (EAB Navigate)
- Redesigned Math Courses with Integrated Developmental Support
- New Student Placement Protocols
- New F (u25)Tj - EMC - /LB.umyD 42 18.04. 42 18.025 82.1923 Tm - [(N)-1.5 (ew)-1.6 (-)0.6 (F (u25)





Formerly known as "The Day Before"

This Friday, January 17th

2:00 – 6:00 PM



#4

BACHELOR'S DEGREES



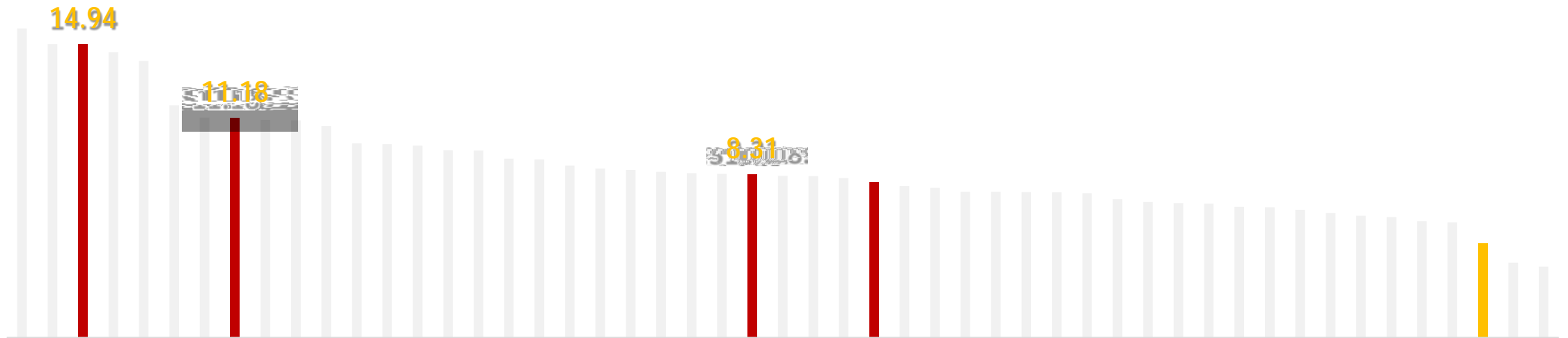
ORIGINS OF THE BAS

Local Imperative



HOW BAD IS IT?

Wyoming ranks 48th in the nation for bachelor's degree production per 1,000 residents (4.80)



THE GOOD, BAD, AND...

Educational Attainment of Residents Age 25+, Cheyenne MSA (2017)

Percent of Population 25 and over with:	Ranking
---	---------



LAGGING BEHIND IN WY

Laramie County lags behind the nation and comparator communities in the increase in bachelor's degree attainment.

Change in percentage of the adult population with a bachelor's degree or higher 2011-2016			
Location	2012	2017	% Change
Yellowstone County, MT	19.1%	21.6%	13.09%
Minnehaha County, SD	18.9%	21.3%	12.78%
United States	18.2%	19.7%	8.30%
Weld County, CO	18.4%	19.0%	3.29%
Wyoming	16.9%	17.4%	2.69%
Laramie County, WY	15.6%	16.0%	2.69%



WHY IT MATTERS

\$1,000,000

On average, bachelor's degree graduates earn \$1 million more over their lifetime than high school graduates.

- *The Economic Value of College Majors (2015)*
Georgetown University Center on Education & the Workforce



GENERAL INFORMATION



BAS APPROVAL TIMELINES

- March 2019 – State Legislature passes legislation (SB111).
- July 23, 2019 – WCCC holds BAS planning session with HLC.
- Aug 21, 2019 – LCCC BOT passes resolution. Authorizes to proceed.
- Aug 28, 2019 – WCCC receives request to proceed with a BAS.
- Sept 11, 2019 – LCCC BOT approves BAS programs.
-



WHAT WILL HLC/WCCO EXPECT?

- We can show how these programs align with our Mission.
- We can demonstrate an identified need.
- We can show that leadership supports these changes.
- We can identify how and where upper-division education differs.
 - What we expect from student competency and ability
 - How our assessment of student learning differs
 - What we expect from faculty and instructional approach
- We can demonstrate that we have adequate resources to support BAS programs and students.
- We can show that we have had broad conversations on campus about adding these programs.
- We can demonstrate that faculty have been the primary individuals developing the programs.



GUIDING PRINCIPLES

We are a comprehensive community college.
Tuition and Fees will remain the same.



#5

ENROLLMENT PICTURE



FALL '18 FALL '19 ENROLLMENT

4283

19/FA LCCC Headcount

37

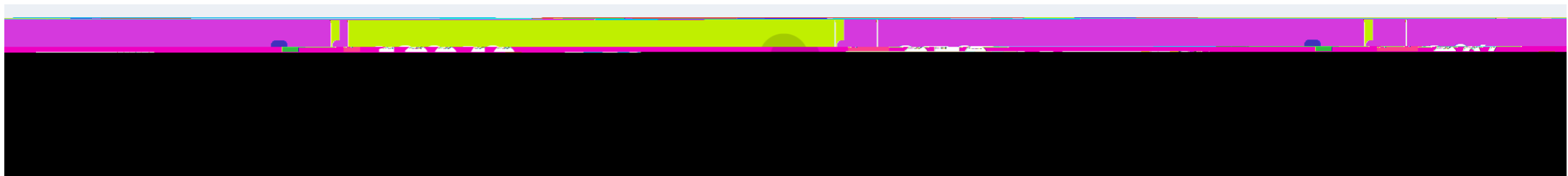
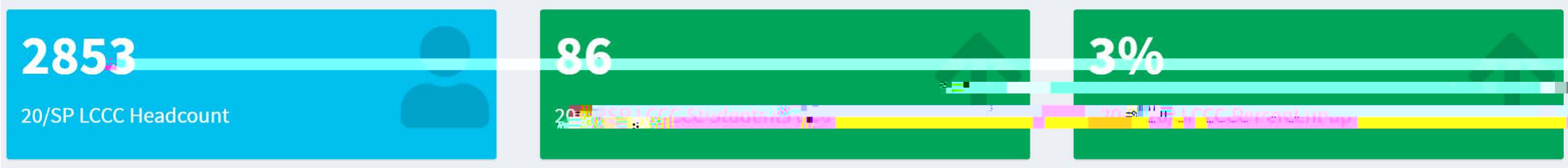
19/FA LCCC % Change

1%

19/FA LCCC Percent Up



SPRING '19 - SPRING '20 ENROLLMENT



BRAGGING RIGHTS



